

Town of Port Hope Overview Presentation: Community Risk Assessment & Fire Master Plan



Prepared by:

THE **LOOMEX** GROUP

WHAT WE DO



LOOMEX TRAINING & EDUCATION

LOOMEX INFRASTRUCTURE

LOOMEX AVIATION

We are emergency service managers, communicators, educators and trainers. We offer a wide range of services through our three divisions.

Our Team



Terry Gervais
Project Lead



Chris McDonough
Fire Protection Advisor



Gerry Pingitore
Project Advisor



Chris Burke
Stakeholder
Engagement Specialist



Tony Van Dam
CRA Specialist



Emily Avery
Quality Assurance Lead

Community Risk Assessment (CRA) Background



Ontario Regulation 378/18 under Fire Protection & Prevention Act, 1997

The Regulation came into effect on July 1, 2019.

- Requires all Municipalities and Fire Departments to conduct a Community Risk Assessment before July 1, 2024.
- Ensures each Municipality makes evidence-based decisions on the provisions of fire protection services based on the unique needs and circumstances of their community.
- The Town of Port Hope retained The Loomex Group to complete the CRA to meet the legislation requirements.

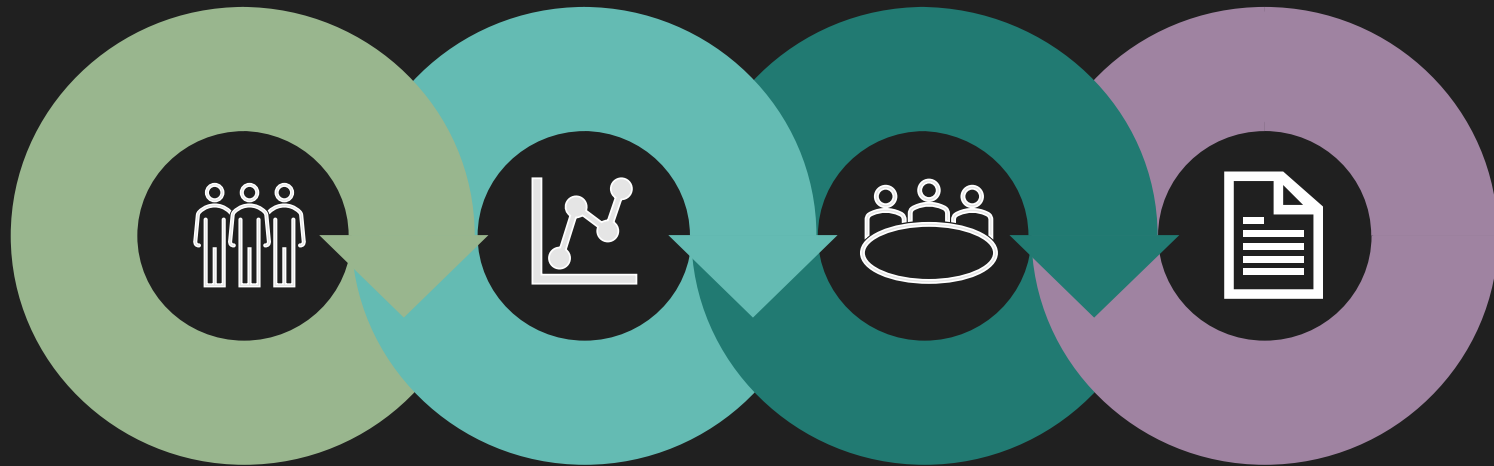
Mandatory Profiles



The regulation has set mandatory community profiles to review when assessing risk to public safety which includes:

- Demographics
- Building Stock
- Critical Infrastructure
- Geography
- Economic
- Hazards
- Public Safety Response
- Community Services
- Past Events and History

Approach & Methodology



Specialist Team

Expert Team with direct experience in managing emergency and fire services departments.

Data Review

Review of legislation, documents, reports, maps, and direct observation of the environment, and engagement.

Engagement

Fire Chief
Deputy Fire Chief
FPO
Officers

CRA

Analysis of information, looking at best practices & development of a CRA

PURPOSE OF A FIRE MASTER PLAN



Ensures the municipality is compliant with the *Fire Protection and Prevention Act (FPPA)* and other applicable legislation



Provides recommendations on the appropriate levels of Public Education, Code Enforcement and Fire Suppression

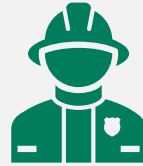


Allows staff to provide Council with the necessary information so they can make decisions that will protect lives and property



Provides a clear picture of current and future needs of the community for emergency services

PURPOSE OF A FIRE MASTER PLAN



Provides Council and the Fire Chief with a “vision” so that proper budgeting and implementation can be provided that mitigates the chances of surprises for the Municipalities



Ensures that the resources available are used in the most efficient and cost-effective way

Fire Master Plan Framework

Review of
applicable
legislation and
by-laws

Organizational
Structure and
Staffing

Public Education
& Code
Enforcement

Review of
Community Risk
Profile

Training and
Education

Life Cycle
Programs

Budgets

Emergency
Response

Fire Protection
Agreements

Emergency
Management

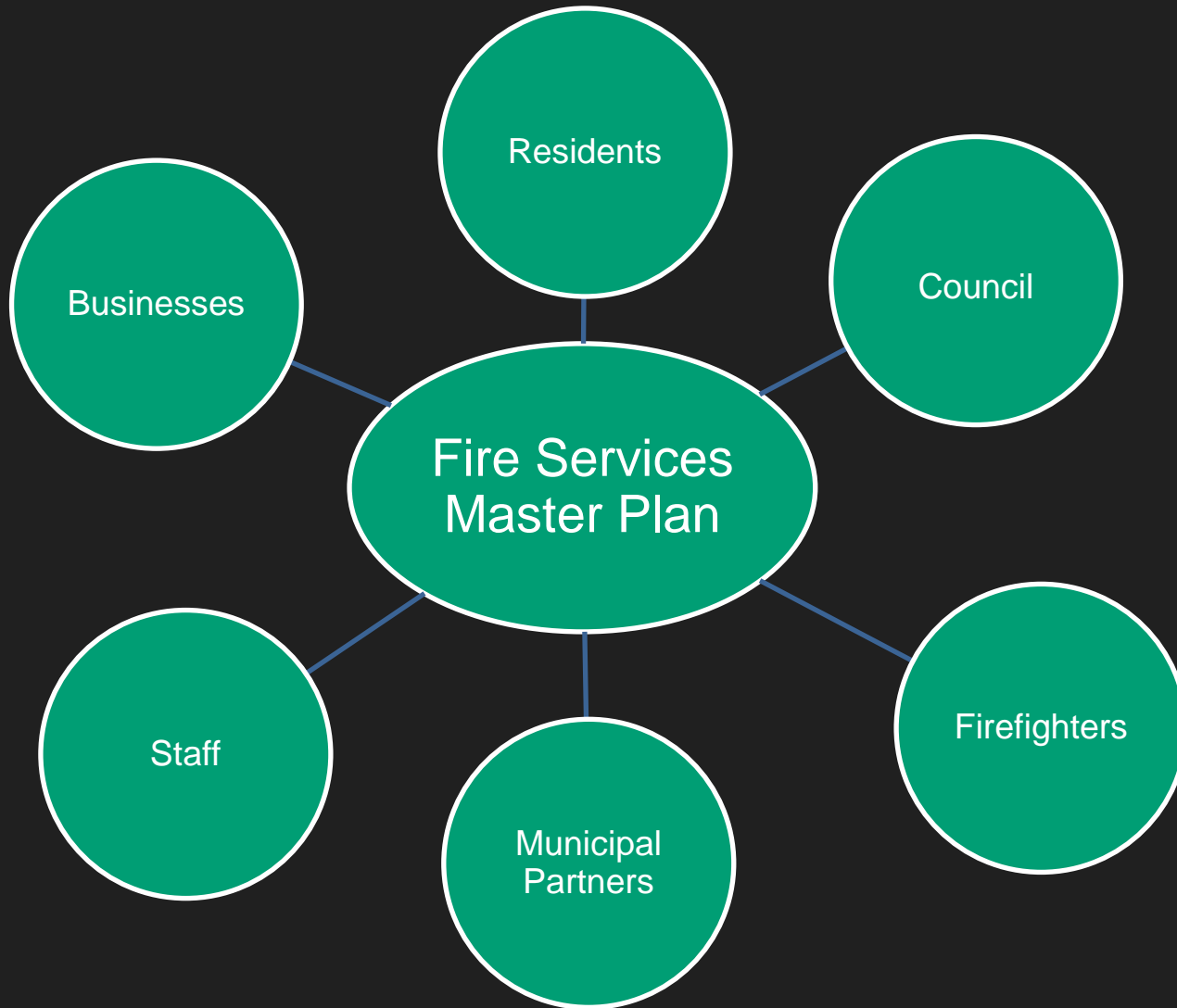
Fleet &
Equipment

Specialized
Rescue

Water Supply

Performance
Measurement

STAKEHOLDERS



STRENGTHS, WEAKNESSES, OPPORTUNITIES AND THREATS (SWOT)

A Firefighter SWOT analysis will be conducted to assist in identifying the department's internal strengths and weaknesses, as well as its external opportunities and threats.



Information will be gathered from the Firefighters utilizing three different approaches:

Facilitated sessions with Firefighters as a group

Individual one-on-one sessions, if required

Surveys given to Firefighters



Together, you have a chance to change the face of your Emergency Services for the residents and businesses in the Town of Port Hope for the next decades to come.



QUESTIONS?
THANK YOU