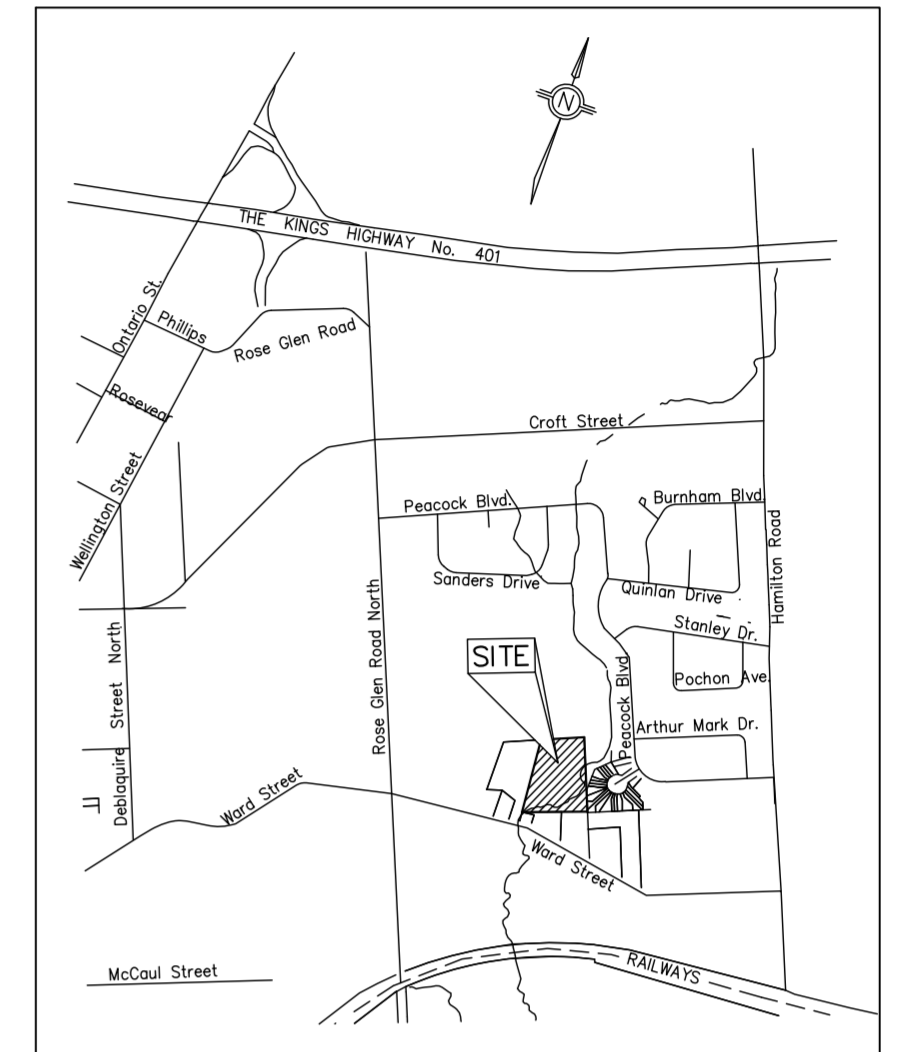


DRAFT PLAN OF SUBDIVISION OF
 PART OF LOT 2 CONCESSION 1
 (PART OF PART 1 PLAN 39R-10543)
 (GEOGRAPHIC TOWNSHIP OF HOPE)
 MUNICIPALITY OF PORT HOPE
 COUNTY OF NORTHUMBERLAND
 SCALE 1:500

5m 0 5 15 25 metres
 FRED PETRICH, B.Sc., O.L.S., O.L.I.P.

KEY PLAN



LAND USE SCHEDULE

LAND USE	AREA (m ²)	AREA %	UNITS
BLOCK 1: STREET TOWNHOUSES	1365.0	8.0	4
BLOCK 2: STREET TOWNHOUSES	1253.1	7.3	4
BLOCK 3: STREET TOWNHOUSES	1071.5	6.2	4
BLOCK 4: STREET TOWNHOUSES	2308.2	13.5	9
BLOCK 5: OPEN SPACE (WATER COURSE)	4889.2	28.5	
BLOCK 6: OPEN SPACE (WATER COURSE)	2593.2	15.1	
BLOCK 7: 0.3m RESERVE	6.0	0.0	
BLOCK 8: FUTURE DEVELOPMENT	215.4	1.3	
BLOCK 9: FUTURE DEVELOPMENT	156.2	0.9	
MUNICIPAL ROAD ALLOWANCE TALBOT DRIVE - 20m WIDE	3293.6	19.2	
SITE TOTAL	17151.4	100.0	21

OWNER'S AUTHORIZATION

WE, 1853992 ONTARIO LIMITED, HEREBY AUTHORIZE SYLVESTER & BROWN LAND SURVEYING LTD. TO PREPARE AND SUBMIT THIS DRAFT PLAN OF SUBDIVISION TO THE MUNICIPALITY OF PORT HOPE.

MIKE OLIVER, PRESIDENT
 I HAVE THE AUTHORITY TO BIND THE CORPORATION

DATE

SURVEYOR'S CERTIFICATE

I HEREBY CERTIFY THAT THE BOUNDARIES OF THE LAND TO BE SUBDIVIDED AS SHOWN ON THIS PLAN AND THEIR RELATIONSHIP TO THE ADJACENT LANDS ARE ACCURATELY AND CORRECTLY SHOWN.

FRED PETRICH, O.L.S.
 SYLVESTER & BROWN LAND SURVEYING LTD.

MARCH 2, 2020
 DATE

ADDITIONAL INFORMATION REQUIRED UNDER SECTION 51 (17) OF THE PLANNING ACT.

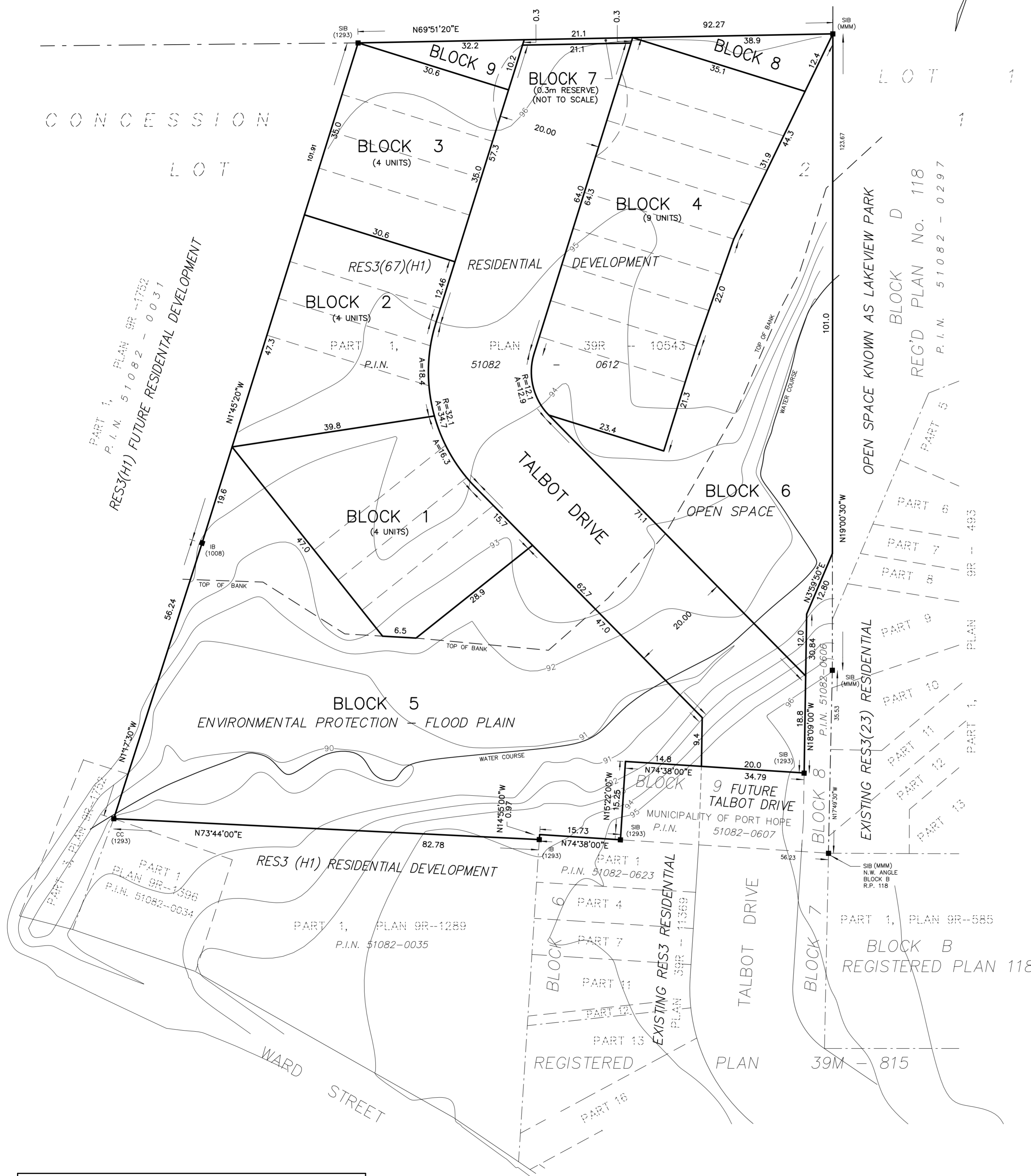
- (a) SEE SURVEYORS CERTIFICATE
- (b) AS SHOWN ON DRAFT PLAN
- (c) AS SHOWN ON DRAFT PLAN
- (d) SEE LAND USE SUMMARY
- (e) SEE DRAFT PLAN
- (f) AS SHOWN ON DRAFT PLAN
- (g) AS SHOWN ON DRAFT PLAN
- (h) MUNICIPAL WATER AND SANITARY SEWER
- (i) SHALLOW LOAM OVER BEDROCK
- (j) AS SHOWN ON DRAFT PLAN
- (k) GARBAGE COLLECTION, FIRE PROTECTION, ROAD MAINTENANCE, SCHOOL BUSES, ETC.
- (l) AS SHOWN ON DRAFT PLAN

DATE (YR/M/D)	BY:	REVISION
2020/03/02	R.D.	INITIAL

S B SYLVESTER & BROWN
 LAND SURVEYING
 191 TORONTO ROAD
 PORT HOPE, ONTARIO L1A 3V5
 OFFICE: 905-885-2260
 FAX: 905-885-1293

DRAWN: RD CHECKED: AK SHEET SIZE: 24x36 JOB No: P2017-039_M

P.I.N. 51082 - 0637
 RES1-1 FUTURE RESIDENTIAL DEVELOPMENT



CAUTION
 DRAFT PLAN BEARINGS ARE ASTRONOMIC AND ARE REFERRED TO THE WESTERLY LIMIT OF REGISTERED PLAN 118 HAVING A BEARING OF N19°00'30"W.